



## Thank you for joining us.

We're excited to welcome you to the 23rd-Annual Costco Scholarship Fund Breakfast to recognize our scholars and thank our donors.

Costco Scholars have continued to thrive in an ever-changing environment. They are hardworking individuals who have gone above and beyond with determination and creativity. Through this program, Costco Scholars have the freedom to explore opportunities to succeed.

It is our pleasure to acknowledge the generous contributions from Costco Scholarship Fund donors. Thanks to your help, the students we celebrate today are empowered to share their knowledge and experience with the communities around them.

We truly appreciate your support of this program. Thank you for your contribution.



**Craig Jelinek**  
CEO  
Costco Wholesale  
Former Board of Trustees  
Member, Seattle University



**Ron Vachris**  
President/COO  
Costco Wholesale

## I would like to welcome everyone to our first in-person breakfast in two years!

The Costco Scholarship Fund empowers students to take full advantage of what their university has to offer for their college education. The dedication these scholars have shown toward their pursuit of education is truly inspiring.

The recipients of the Costco Scholarship Fund have been able to achieve their goal of attending university because of your generosity. Thank you for your donation and for joining us today.



**Claudine Adamo**  
EVP, Merchandising  
Costco Wholesale



STATE OF WASHINGTON  
OFFICE OF GOVERNOR JAY INSLEE

## Greetings from the Governor

September 21, 2022

It is my honor to welcome you to the 23<sup>rd</sup>-Annual Costco Scholarship Fund Breakfast.

The Costco Scholarship Fund was created to give underrepresented students the opportunity to further their education at Seattle University and the University of Washington. Twenty-three years later, it continues to nurture talent and dreams that can potentially change the world. By investing in their future, we can feel confident that the students honored today are qualified candidates who will work hard to help build a stronger economy and ultimately create a better tomorrow for all of us.

This outstanding program is about investing in the potential of Washington's minority and disadvantaged students, many of whom will be the first in their family to attend college. It's about encouraging these students to pursue higher education and providing the resources needed to make that goal a reality.

In our 21<sup>st</sup> century economy, a quality education is essential for securing the family-wage jobs of today and the emerging jobs of tomorrow. By investing in deserving students today, we not only equip them and their families for a brighter future, but also strengthen our broader workforce and help our businesses find the talented workers they need right here at home.

After a two-year hiatus, I am pleased that this year's celebration of the achievements of Costco Scholars can be enjoyed in person. As they navigate their way in an evolving global workforce, it is important to acknowledge the ambition and dedication these scholars have shown.

I would like to thank Costco for its ongoing commitment to increasing diversity on our campuses and enriching the lives of young people through education, and give a special thank you to Jim Sinegal, Craig Jelinek, Susan Brotman and the late Jeff Brotman. I would also like to acknowledge the donors whose financial support makes it possible to provide these opportunities.

Thank you for your commitment to empowering students, and please accept my best wishes for a successful event.



Very truly yours,

**Jay Inslee**  
Governor



# BREAKFAST AGENDA

## EMCEE – CONVENE

Chastity Groves – UW Alum

## WELCOME

Jim Sinegal and Susan Brotman

## REMARKS/SCHOLAR STORIES

Eduardo M. Peñalver – President, SU  
Sharol Fernandez-Hernandez, SU  
Ana Mari Cauce – President, UW  
Mahamed Kassim, UW

## REMARKS

Craig Jelinek

## SUPPLIER RECOGNITION

NY Pizza Company

## ALUM VIDEO

Tony Nabors, UW Alum

## EMCEE STORY

Chastity Groves, UW Alum

## ALUM VIDEO

Colina Bruce, SU Alum

## THANK YOU AND CLOSING

Chastity Groves, UW Alum  
Colina Bruce, SU Alum

# YOUR EMCEE



## Chastity Groves *Costco Scholar Alum*

**SCHOLARSHIP BREAKFAST EMCEE**  
**'11 B.S. MATERIALS SCIENCE & ENGINEERING**  
**UNIVERSITY OF WASHINGTON**

From a young age, Chastity Groves had a natural talent and love for math. But without the family resources to support a university education, she feared that her dream of becoming an engineer would have to be postponed. Thanks to the Costco Scholarship Fund, Chastity earned a degree in materials science and engineering at the University of Washington, where she was president of the UW chapter of the National Society of Black Engineers (NSBE). At the UW she also met fellow Costco Scholar Philip Groves; they eventually married, and the couple now both work at The Boeing Company and have four children. As a senior engineer, Chastity continues to share her passion for math with others, serving as an alum speaker for the NSBE and being showcased in materials for elementary students about women in STEM.



# UNIVERSITY OF WASHINGTON

The University of Washington is one of the nation's foremost institutions of higher education, richly combining research, instruction and a mission of public service.



**Ana Mari Cauce**  
*President and Professor of Psychology*

## UNIVERSITY OF WASHINGTON

Education has the power to transform – not only the lives of the students for whom it opens up new pathways and opportunities, but also the families, organizations and communities those students are a part of. Supporting accessible higher education creates powerful, generational impact. Through your gifts to the Costco Scholarship Fund, you are investing in a more equitable and inclusive future – one that lives up to the values and hopes we share as a community.

Thank you for helping to realize that future by creating opportunities for students. Last year, we joyfully welcomed students back to campus and in-person learning, but reckoning with the inequities worsened by the pandemic has underscored how vitally important the Costco Scholarship Fund is. Your support for this incredible program is essential to its success and the success of our outstanding Costco Scholars. Thank you for making a difference today and for decades to come.



« Suzzallo Library »

UNIVERSITY of  
WASHINGTON



« Cherry blossoms on the UW Quad »

## Tri-Campus Enrollment

(FALL 2021)

Undergraduate	41,129
Graduate	15,068
Professional	2,170
Non-Matriculated	1,290
<b>Total Enrollment</b>	<b>59,657</b>

## Tri-Campus Undergraduate Demographics (FALL 2021)\*

Underrepresented Minorities	11.51%
African American/Black	2.27%
Native American/Alaska Native	0.34%
Hawaiian & Other Pacific Islanders	0.41%
Hispanic	9.35%
Asian	22.16%
Caucasian	35.27%
International	11.59%
Multi	16.40%
Not Indicated	2.20%

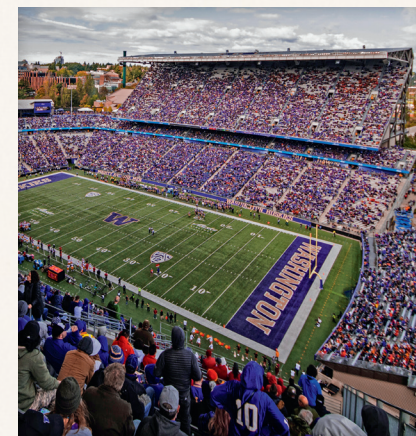
*\*Totals do not equal exactly 100% and subtotals do not equal Underrepresented Minority total due to rounding and students selecting multiple races/ethnicities*

Women	54.61%
Men	45.39%

## Undergraduate Tuition & Fees

(2021-2022 ACADEMIC YEAR)

Resident Tuition	\$12,076
Non-Resident Tuition	\$39,906
Receiving Aid	22,890 (56%)
Receiving Pell Grants	10,365 (25%)
<b>Total Awarded Costco Scholars</b>	<b>1,049</b>
<b>Total Costco Scholar Graduates</b>	<b>631</b>



« Husky Stadium »



« Denny Hall »

# SEATTLE UNIVERSITY

Seattle University is the largest independent university in the Northwest with a focus on educating the whole person to effect change that has lasting impact.



## Eduardo M. Peñalver

*President*

SEATTLE UNIVERSITY

It's my honor to be a part of the event celebrating the Costco scholarships. Since its inception, Costco scholarships have provided millions of dollars in scholarship aid and have expanded access to education for over 1,200 Seattle University students from underrepresented backgrounds. But more than the numbers, the best way to understand the impact of the Costco Scholarship Fund is through the amazing accomplishments of the scholarship recipients themselves. Seattle University is so proud of its partnership with Costco, an icon of the Pacific Northwest whose commitment to its employees and whose philanthropic spirit is a model of corporate citizenship.

Seattle University aspires to create leaders for a just and humane world. Our Costco Scholars have shown us that – given the opportunity – they have what it takes to become those leaders. Costco Scholars are resilient, ambitious and determined to succeed. They enliven our student body through their unique backgrounds and experiences. Their voices diversify our student culture, and their impact extends beyond Seattle University's campus through their service to the community.

The impact of the Costco Scholarship Fund can come full circle, not only in the lives of students, but of their families and supporters as well. Your commitment to our students helps them to achieve their potential. Your belief in their ability to succeed, and your investment in opening to them the door of opportunity, has had a profound impact on thousands of lives.

On behalf of the Seattle University community, I thank you for continuing to support the Costco Scholarship Fund.



« The Quadrangle »



« Jim and Janet Sinegal Center for Science and Innovation »

## Enrollment (FALL 2021)

Undergraduate	4,301
Graduate	2,210
Law School	757
Total Enrollment	7,268

## Undergraduate Demographics

(FALL 2021)\*

Underrepresented Minorities	25.8%
African American/Black	7.4%
Native American/Alaska Native	1.8%
Hawaiian & Other Pacific Islanders	3.9%
Hispanic	14.3%
Asian	31%
Caucasian	52.9%
International	8.7%
Multi	9.2%
Not Indicated	2.9%

*\*Students may select more than one ethnicity to identify themselves; as a result, the total is more than 100%.*

Women	61.5%
Men	38.5%
Washington Residents	44.5%

## Undergraduate Tuition & Fees

(2021-2022 ACADEMIC YEAR)

Resident/Non-Resident	\$48,510
Receiving Aid	4,135 (96.1%)
Receiving Pell Grants	887 (20.3%)
Total Awarded Costco Scholars	1,222
Total Costco Scholar Graduates	837

*Seattle University is an independent, Jesuit university dedicated to educating the whole person, to professional formation, and to empowering leaders for a just and humane world.*



« Kubota Legacy Garden »

SEATTLE  
UNIVERSITY

## COSTCO SCHOLARS: PAST & PRESENT



### Tony Nabors

*Costco Scholar Alum, Alum Video*  
**'06 B.A. AMERICAN ETHNIC STUDIES**  
**UNIVERSITY OF WASHINGTON**

Tony Nabors is devoted to advancing racial equity. With the Costco Scholarship Fund's support, he earned his degree in American Ethnic Studies at the University of Washington. He went on to become the first director of diversity, equity and inclusion for the Everett (Washington) Housing Authority – and according to the organization's executive director, Tony was the first person to hold a DEI director title in any U.S. housing authority. His strategy development work gained the attention of the national Public Housing Authorities Directors Association, which submitted it for use by the Biden administration. Tony now runs a successful racial equity consultancy, advising across many sectors and industries. This year for the second time, he'll co-lead Racing to Equity's Transformational Leadership Institute, a yearlong cross-disciplinary intensive leadership program.



### Mahamed Kassim

*Costco Scholar, Featured Undergraduate Speaker*  
**'24 B.S. COMPUTER SCIENCE, UNIVERSITY OF WASHINGTON**

As one of 12 children in his family, Mahamed Kassim thought paying for college would be out of the question. But he knew the importance of education, and after he discovered his passion for math, he enrolled in community college as a high school junior and earned an Associate of Science degree before even graduating from high school. Thanks to the Costco Scholarship Fund, Mahamed is now studying computer science at the University of Washington, where he's active in the National Society of Black Engineers, the Somali Student Association and the Muslim Student Association. Mahamed also volunteers as a STEM instructor with East African Community Services, which provides educational resources to immigrants and refugees, and as a soccer coach and mentor with the Somali Health Board. This summer Mahamed interned at Amazon as a software development engineer.

## COSTCO SCHOLARS: PAST & PRESENT



### Colina Bruce

*Costco Scholar Alum, Alum Video*  
**'07 BA COMMUNICATION STUDIES, SEATTLE UNIVERSITY**  
**'15 MA NONPROFIT LEADERSHIP, SEATTLE UNIVERSITY**

Colina was a scholarship recipient through the Washington State Achievers Program, which she credits with providing guidance that significantly influenced her trajectory as a first-gen student. After receiving her acceptance to Seattle University, Colina suffered a major family loss, and her grades tanked. SU revoked her acceptance. Determined, Colina enrolled at Highline Community College, earning a 3.7 GPA her first quarter. SU reactivated her admission, and the Costco Scholarship Fund enabled Colina to attend SU. After graduating with a BA in Communications, Colina returned to SU, was the inaugural Jim Sinegal graduate fellow, and earned a master's in Nonprofit Leadership. She soon joined the Sinegal Center for Community Engagement, providing oversight for the SU Youth Initiative as the Director of Education Partnerships. Colina recently left SU to work full-time as CEO of her own company, Noir Lux Candle Co. In two short years, Colina grew a pandemic passion project from a kitchen hobby to a brick-and-mortar location in downtown Seattle.

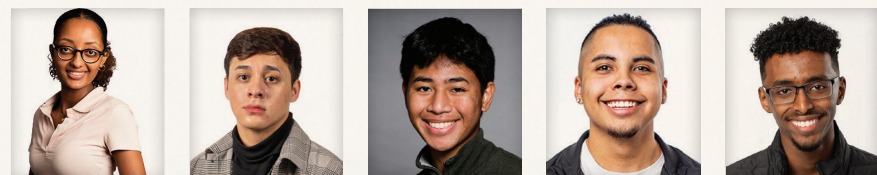


### Sharol Fernandez-Hernandez

*Costco Scholar, Featured Undergraduate Speaker*  
**'22 BA GLOBAL BUSINESS, SEATTLE UNIVERSITY**

The daughter of Mexican immigrants, Sharol's childhood memories are of being constantly on the move, following her father as he searched for construction work. College never seemed an option for Sharol due to severe financial constraints and a lack of belief that success in higher education was even possible. Then in middle school, Sharol's track coach changed her outlook. He encouraged her, maintaining that if she worked hard, college could be a real possibility that would open doors to her future. After high school she was torn between Arts and Business paths – unsure of her future. However, she knew she wanted to continue forward with her education. To ease the financial burden, Sharol decided to attend Highline Community College for two years, with a later transfer to a university. Seattle University had the greatest appeal as it promised familiarity with Seattle, small class sizes and a focus on Jesuit roots. The Costco Scholarship Fund enabled Sharol to transfer into SU's Albers School of Business and Economics. Before the scholarship she worked two jobs, but the scholarship support enabled her to work fewer hours, continue to lend a hand at home and focus more intently on her studies. Sharol was able to find support to help balance all that she was juggling. Sharol, a member of the Tri-Alpha Honor Society and Dean's List, plans to start a career in marketing or product and research development. Sharol has a goal to work as a creative director, open her own business and pursue the arts.

# CURRENT COSTCO SCHOLARS



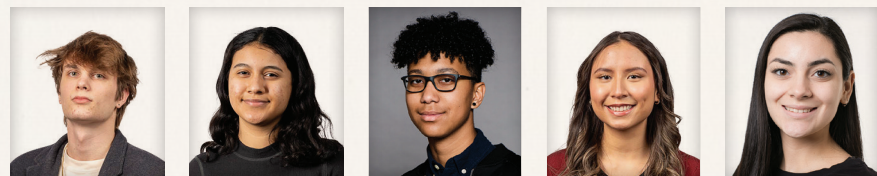
Luna Abraham SU  
Khalid Abrera UW  
Anthony Acob SU  
Jesus Adame UW  
Suheyb Aden UW



Aaron Aguon-Africa SU  
Ekram Ahemed UW  
Fatxi Ahmed UW  
Annete Alcantar UW  
Fatima Alfaro UW



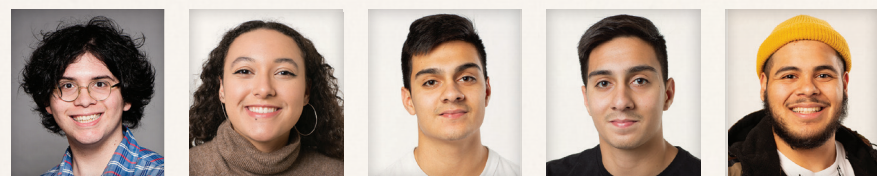
Luis Alfaro-Frias UW  
Jibril Ali-Halane UW  
Dion Archer-Roll UW  
Osvaldo Arias UW  
Karina Armenta Gaytan UW



Aiden Armstrong UW  
Daisy Ayala UW  
Alex Bailey SU  
Anahi Barragan UW  
Linda Barragan UW



Hailey Bass UW  
Eden Beyene UW  
Frazer Birru UW  
Karla Borella-Leon SU  
Ebonney Bowhay UW



Nicholas Brandis SU  
Tori Brockman UW  
Jesus Buenrosto UW  
Jose Buenrosto UW  
Bryant Calderon UW

# CURRENT COSTCO SCHOLARS



Delliah Canales UW  
Esther Carpenter UW  
Lindsey Carrasco UW  
Isabel Castellon SU  
Jocelyn Castillo Santacruz UW



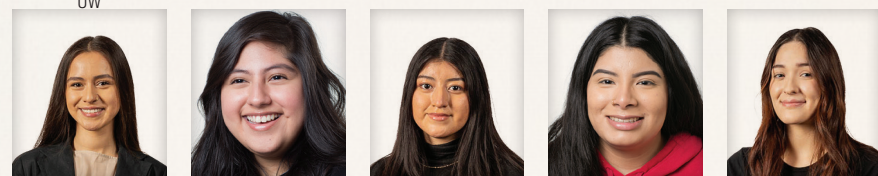
Eivy Cedenon UW  
Wendy Celaya-Ibanez UW  
Aracely Cerrillos Anzar UW  
Fernanda Cerrillos UW  
Cithlali Chavez UW



Eleazar Chavez-Rodriguez UW  
Nandita Chetty UW  
Kimseam Chou UW  
Cynthia Cisneros UW  
Alyssa Cole-Carranza UW



Elizabeth Contreras-Demesio UW  
Christina Cordova UW  
Ithay Cortes-Quiroz SU  
Jose Cortez-Alonso UW  
Jazmin Covarrubias UW



Cittalli Cruz UW  
Daniela Cruz UW  
Karina Cruz UW  
Osiris Cruz UW  
Maribel Cuevas UW



Justus Curry SU  
Kenneth Curry UW  
Mary Davis UW  
Waltana Dawit UW  
Ashley Dinh UW

# CURRENT COSTCO SCHOLARS



# CURRENT COSTCO SCHOLARS



# CURRENT COSTCO SCHOLARS



# CURRENT COSTCO SCHOLARS



# CURRENT COSTCO SCHOLARS



# CURRENT COSTCO SCHOLARS



# CURRENT COSTCO SCHOLARS



Anthony Unpingco  
UW



Jorge Vaca Garibay  
UW



Emoni Valdovines  
UW



Noe Vargas-Fuentes  
UW



Zoe Venters-Tsai  
UW



Diana Verduzco  
UW



Anahi Villanueva  
UW



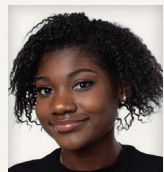
Raul Villanueva  
UW



Tram Bao Ngoc Vu  
UW



Sophie Wankel  
SU



Sierra Ware  
UW



David Welch Kelihoomalu  
SU



John Williams Jr.  
UW



Andy Xiong  
UW



Alianna Xu  
SU



Samantha Yang  
UW



Beemnet Yimam  
UW



Belen Zepeda  
UW



# CURRENT COSTCO SCHOLARS

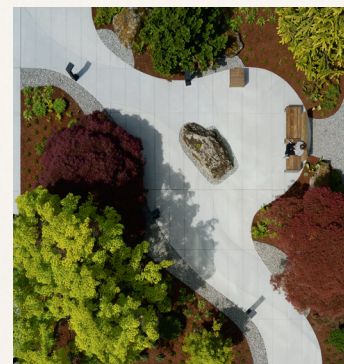
## NOT PICTURED

Hamda Abdi UW	Ikran Abdi UW	Dahira Abukar UW	Daniela Aguirre-Tobar SU	Corina Aguon-Africa SU
Nahom Alemayehu UW	Mila Allen SU	Asigiah Aly UW	Mia Ayala-Marshall SU	Kateri Azure SU
Kathleen Bach UW	Sophia Bajinya SU	Naol Balcha SU	Anthony Balfour UW	Chyanni Balogbog-Domingo SU
Rebecca Barrera SU	Jayden Bartolome SU	Belul Belai SU	Martha Benitez Solorzano UW	Valentina Bernal SU
Branni Bowechop SU	Isreal Boyd SU	Nicholas Brandis SU	Lyla Bryant SU	Diahnae Buchanan SU
Chelsea Buder SU	Ephratah Burdette SU	Fernando Canal UW	Lesley Cardona Puente SU	Aaliyah Cariaga SU
Clarissa Castaneda Sanchez SU	Sabrina Castro SU	Edwin Chavarria Palacios SU	Cody Chow SU	Sabrina Choy-Velando SU
Jhet Cooperrider Young SU	Luis Coronado Guatzin SU	Pablo Coronado Guatzin SU	Ithay Cortez-Quiroz SU	Trinity Cruz SU
Ziah Daily SU	Valeria Davila-Hernandez UW	Benjamin De La Cruz SU	Jordan Deas SU	Camille Dietrich SU
Anthony Dubra SU	Keshay Dumetz SU	Tate Dunbar UW	Daniel Emilien UW	Betania Ephrem SU
Kyandra Espindola SU	Hajung Farrow SU	Elizabeth Felix SU	Cassie Fiapito SU	Kjirstin Foresman UW
Alvin Fox SU	Ziony Franzen SU	Cesar Fregoso SU	Karina Galvan SU	Elise Garcia-Leiva SU
Shirley Garcia SU	Ethan Garza SU	Gian Gaspar-Perez SU	Amadou Gaye SU	Bezalel Gidey SU
Christopher Gomez SU	Juan Gonzalez-Hernandez SU	Sara Gonzalez SU	Jimena Gramajo SU	Diego Guadarrama UW
Susanna Guzman SU	Alexander Habib SU	Ruweyda Haji SU	Amaya Hall SU	Aunjena Hampton SU
Ashley Haney UW	Stephanie Harper SU	Justin Hawes UW	Caleb Headen SU	Jazmin Hernandez SU
Stephanie Herrera SU	La'Neiya Diana-Renee Holmes UW	Lorenzo Ipanaque SU	Dominic Javar SU	Abdoulie Jawara SU
Jamaari Jefferson SU	Kamettii Johar SU	Kayla Johnson SU	Naja Johnson SU	Sasha Jorgensen SU
Pamela Juarez UW	Aiyannah Kasota SU	Elainie Kassa UW	Lidya Kassa SU	Zachary Kawada SU
Genevieve Kennebrae SU	Ravy Khov UW	Amina Kodah SU	Cesca Konshok-Mas SU	Kailyn Kupau SU
Michael Larson SU	Jonathan Lawrence SU	Andrea Leiato UW	Jude Librizzi SU	Elena Lobaton SU

# CURRENT COSTCO SCHOLARS

## NOT PICTURED

Luis Lopez-Martinez UW	Vianca Lopez-Camargo SU	Taychell Lott UW	Elizabeth Lujano-Caballero UW	Evelyn Madrid-Fierro SU
Larissa Madrigal SU	Caleb Malaer SU	Maricruz Maldonado Vargas UW	Kaylee Mang SU	Alyssa Mae Manlapaz SU
Isabella Mansanarez SU	Alexander Marin-Ochoa SU	Amaya Marin Osorio SU	Berlyn Martinez SU	Wesly Mba UW
Jennifer Mendez UW	Luis Mendoza-Bautista SU	Michelle Mendoza Morales SU	Kaelem Menjivar SU	Miette Meyer SU
Punahele Miller SU	Jaxon Mossman-Smith SU	Victoria Mulugeta UW	Selah Murray SU	Skylar Myers SU
Giselle Napoli SU	Jordan Nath UW	Kristofer Navarro-Rodriguez SU	Jean Jaque Ndayisenga SU	Jr Niemczyk SU
Kevin Nieto-Estrada SU	Teylie Nouchi SU	Luis Fernando Nunes SU	Ammar Omer SU	Ahyram Orozco Jimenez SU
Sara Otto SU	Peter Owen SU	Calliope Pannell SU	Jesus Pardue SU	Alvaro Pena SU
Denisse Peralta SU	Myles Phillips SU	Azul Ponce SU	Madison Quartero SU	Oswaldo Ramirez UW
Rosmarie Ramirez SU	Lorenzo Ramos Bellisari SU	Madeleine Ramos SU	Maya Reid SU	Jayden Respicio SU
Keith Reyes SU	Daniel Rios SU	Kevin Rocha SU	Shylynn Rodrigues SU	Vanessa Rodriguez SU
Maximiano Running Hawk SU	Sophia Ruvalcaba SU	Ayana Sabbas UW	Sophie Sagaysay SU	Alexis Salomon SU
Keila Santos SU	Isatu Scott SU	Japeheth Seifu UW	Liliyah Simpson SU	Rut Solomon SU
Alexandra Takemoto SU	Gloria Tamayo-Aguayo SU	Luis Tamayo Vega SU	Emily Tavau UW	Daniel Teclé UW
Amir Tedesse SU	Sanda Thang UW	Dieu-Ly Tran UW	Max Tran SU	Athena Ubaldi SU
Angelina Ung UW	Brandon Velaochaga SU	Alexa Vivas SU	Makiah Ware SU	Jalen Webber SU
Tacoma Wela SU	Kalayah Wicks SU	Kayli Williams SU	Passion'L Williams SU	Jonathan Xu SU
Deia Zalez SU	Edwin Zamorano Salmoran SU	Gabriela Zapata SU	Maribel Zuniga Gutierrez SU	





## DONORS

---

\$125,000+

Jeff and  
Susan Brotman

---

Jim and  
Jan Sinegal

---

\$100,000+

Imaginarium and Company,  
Michael Fux Foundation

---

Allied Marketing, Limson Trading,  
Reynolds Consumer Products,  
Twin Star Home



## DONORS

\$75,000+

### First Quality

\$50,000+

Allen Lund Company	Mohawk, Inc.
AT&T	Naturade
Burnbrae Farms Limited	Navitus Health Solutions
Chef Hak's	Nestlé Health Science
Chobani	Newell Brands
David Peyser Sportswear, Inc	Nice-Pak Products
Eastman Footwear - Khombu	NY-PIZZA
Epson	Oberto Snacks Inc.
FAM Brands	Ornua Foods North America, Inc.
Georgia-Pacific	PepsiCo
Haddad Brands	Pharmavite
Henkel Consumer Brands	Philhobar Design Canada Ltd.
Huhtamaki	Red Sun Farms
Impossible Foods	Setton International Foods, Inc.
The Kellogg Company	Seyfarth Shaw LLP
Kerry	Shinan 1004 Seaweed Co., Ltd.
Kimberly-Clark	Trident Seafoods Corporation
Komar	United Legwear
Massimo Zanetti Beverage USA	WN Pharmaceuticals
Modes Corwik Inc	



## DONORS

\$25,000+

Advantage Solutions	Iris Foods Co, Inc.	Robinson Construction Co.
BlueTriton Brands	JACHS NY LLC	Ryder System, Inc
Central Garden & Pet	John Soules Foods	SM Global LLC
Colgate-Palmolive Company	Johnson & Johnson	Sondors
Comfort Revolution	Kettle Cuisine	SPARC
Design Group UK	Kruger Products	StriVectin
Duracell	LuxNine Corporation	Synergy T
Felina	Mastronardi Produce Limited	Takeya USA
Gobo Enterprises	McCormick and Co., Inc	Tarantino Gourmet Sausage
Griffith Foods	MerchSource LLC	Tempur Sealy
Hofseth North America	Pacific Cheese Company, Inc.	True Innovations Living Style
Honeydew	Peet's Coffee	Unilever
i-Health, a Division of DSM	Perkins Coie	UNIONBAY
Inspire Fitness	Premier Nutrition Company	Vida Shoes
International Vitamin Corporation	PRN	Youtheory
Intuit	Procter & Gamble	Zhejiang Zhengte
	Ricardo Beverly Hills	



## DONORS

### \$15,000+

32 Degrees	Hanjung Food LTD	One Jeanswear Group
ADW Acosta, LLC	Hansung USA LLC	Overseas Food Trading, Ltd.
Base Brands, LLC/Reduce	Honey Smoked Fish Holdings	Pilgrim's
Basic Research	Horizon Brands/Type S/Koda	Playa Hotels & Resorts
Bridgestone USA	Hormel Foods	Renfro Corporation/ K. Bell Socks
Cargill Salt	ITW Food Equipment	Request Foods
Citi	JS Royal Home	Riverside Natural Foods LTD
Clorox	Craig Jelinek	San Francisco Bay Coffee - Rogers Family
Clover II Corporation	Johanson Transportation Services	Sargento Foods, Inc.
Coca-Cola Company	KamCo Group LLC	Scotts Miracle-Gro
College Success Foundation	Keurig Dr Pepper	Seattle University
Crider Foods, Inc.	Klipsch	SharkNinja
Damascus Bakery OPCO LLC	Lasko Products LLC	Sony Electronics
Darigold	Leclerc Foods USA	Springs Window Fashions LLC - Bali
Divco	LG Electronics USA, Inc.	Sugar Bowl Bakery
Dobiz Co., Ltd	Dansons	Taylor Farms
Domtar	LT Apparel Group	Titan Chair LLC - Osaki Massage Chair
Edward Marc Brands	MG2	University of Washington
Emerson Group	Meta	Wahl Clipper Corporation
Endless Hope Private Foundation, Inc.	Michelin North America	Ware Malcomb
Ethica Wines	Milton's Baking Company	Weider Global
Foster Garvey PC	Monster Energy	Wells Lamont Retail
GEM-Pack Berries	Mucci Farms	Welspun USA, Inc.
General Mills	Nestlé Coffee Partners/ Starbucks	Whalen Furniture
Gertmenian and Sons	Nestlé USA	Wireless Advocates, LLC
Gourmet Settings, Inc.	Northwest Atlantic	
Haggar Clothing Co.	O-Cedar (FHP)	
Haleon	Olam	

### \$10,000+

Greenberg Glusker LLP	Leapfrog Brands	Sabert
-----------------------	-----------------	--------

## DONORS

### \$5,000+

Claudine Adamo	Jason Furniture / Kuka	Stoel Rives LLP
Atalanta Corporation	Sue McConnaha	Sunbrella, Glen Raven, Inc.
Camanchaca Inc	Nichols Pistachio	Tapia Quality Products, LLC
CONNECT, powered by American Family Insurance	Northridge Home, Inc	Town and Country
G-III Leather Fashions	Peak Construction Group	Ron Vachris
Holland & Knight LLP	Ricola	W. L. Butler Construction, Inc.

### \$3,000+

4Earth Farms	Hain Celestial	NSI Group LLC
Alcon LLC	Harvey USA LLC	Nu-Pure Beverages
Alpine Fresh, Inc	Hisamitsu	Ocean Spray
Amax Group USA, LLC	iFIT Health & Fitness	Pacific Plaza Imports
Andersen & Sons Shelling	Igloo Corp	Paris Brothers Inc.
Andrew & Williamson/ GoodFarms	ION Audio	Perrigo
Aurora Organic Dairy	Jakks Pacific	Philips North America
B&G Foods	Jones Dairy Farm	Refresco Beverages US Inc.
Backyard Products	Kashi Company	Rockline Industries
BakeMark	Kellogg N&I	Roland Corp.
Bayer HealthCare	Kellwood Company	Sartori Cheese Company
Beiersdorf	Kiolbassa Smoked Meats	SC Johnson
Bel Brands USA	Koval Williamson	Schuman Cheese
Blue Diamond Growers	La Boulangerie des Gourmets SAS	Seville Classics
Bush Brothers & Company	Lao Xie Zhen (LXZ)	Smithfield
C.A. Fortune	Lebanon Seaboard Corporation	Snak King
Calavo Growers Inc	Link Snacks Inc.	Sunkist
Cargill	Little Farm Frozen Foods, Inc.	Sunrise Global Marketing
Central National Gottesman, Inc	LNK International, Inc.	Talking Rain/Sparkling Ice
Chocmod USA, Inc.	Manitoba Harvest Hemp Foods	TKO Evolution
Citadelle Maple Syrup Producers	Maples Rugs	Treasury Wine Estates
Del Rey Avocado Company	Mayfield Consumer Products	Tree Top, Inc.
Demant	Moen	Tyson Foods
Dyson	Mohawk Home	UpStar Nutrition, Inc./ dba Keto Foods
Enterprise Holdings	Morton Salt, Inc.	Valley Fine Foods
Essendant	Nautilus Inc.	Vandale Industries
Falcon Safety Products, Inc.	Nemcor, Inc.	Ventura Foods
Filippo Berio USA, Ltd.	NewAge Products	Vital Proteins
Green Grass Foods, Inc (nutpods)	Niagara Bottling	Whirlpool Corp.
Gwen Studios, LLC	Nippon Paper Crexia Co., Ltd.	Windset Farms

## DONORS

### UP TO \$3,000

Alaskan Leader Seafood	Cosentino	La Colombe	Q & B Foods, Inc.
Alcon	Anthony Datillo	La Terra Fina	Rich's
Alpha Foods	Russ Decaire	Legacy Retail Solutions	Ruiz Food Products
American Licorice Co	Dharm International LLC	Cassandra Lemoto Tongilava	Safe Food Corporation
AMS	Dorel Home Furnishings	Leprino Foods	Seviroli Foods
Authentic Lifestyle/ Campers World	James Drew	Lifetime Brands	Siete Foods
Bard Valley Date Growers	Duraflame	Maple Leaf Foods	SJ Food Connect
Mark Bevan	DWS Sales LLC	Materne North America	So Good So You
Big Box Sales & Marketing	ePOWER360 LLC	Moët Hennessy USA	South Bay International
Boisset Collection	Europastry	MTM National	Span Construction & Engineering
Brentwood Originals	EyeKing	Mullally International Inc.	Spiess Australia
Buchalter	Flexsteel Industries, Inc.	MUSH Food, Inc.	StudioChic, LLC
Cascades Tissue Group	Forde-McGovern & Associates, Inc.	Navigate CPG	SunVilla Corporation
Catania Worldwide	Frieda's Specialty Produce	The New Primal	Sunwest Sales
CCC Associates Company Inc	Richard Galanti	Nixie Sparkling Water	Kristen Swanson
dba Caffco International	Hampton Farms	Noel Alimentaria USA, Inc.	Taiwan Farm Industry Co., Ltd.
Certified International Corp.	Handy Living	Norpac Fisheries Export	TASR Club Sales & Marketing, Inc dba CMJ Sales & Marketing
Chairmans Foods	James Harrison	Norpaco, Inc.	Kim Thomas
Cibo Vita - Nature's Garden	John Higgins	Oliver Marketing	Jay Tilley
CJ Foods USA, Inc.	HP Hood	OPC/Rader Farms	TNT Marketing
Clif Bar & Co.	Index Fresh, Inc.	Eric Orren	Transcon Sales & Marketing Group
Coastal Sunbelt Produce	Infinity X1	OWYN	UNREAL Brands Inc.
Donald Coleman	Innova Foodservice, Inc	Pacific Coast Producers	VINE CO., LTD.
Robert Collins	Ito En North America, Inc.	Pebble Beach Apparel	WESTport Corp.
Complete Clothing Company	Teresa Jones	Post Consumer Brands	Wismettac Asian Foods
	Kaplan Saunders Valente & Beninati LLP	Professional Marketing Corporation	

Save the date  
Join us next year for the  
24th-Annual  
Costco Scholarship Fund Breakfast

Friday,  
September  
**15**  
2023  
at Meydenbauer Center

#### Acknowledgments

3M – Save the Date Post-it Notes

Kendal Floral – Flowers

Precision Wire Products Inc. – Mini Shopping Carts

Costco Travel – Travel & Hotel Arrangements

Costco Wholesale Marketing Department – Program Design & Production

# Thank You

for contributions received as of August 26, 2022.

We also would like to acknowledge  
all future contributions.

**WE ARE PROUD AND HONORED  
TO SUPPORT THE FUTURE  
GRADUATES OF THE  
COSTCO SCHOLARSHIP FUND.**



THE MICHAEL FUX  
FOUNDATION

[michaelfuxfoundation.org](http://michaelfuxfoundation.org)



[imaginariumandco.com](http://imaginariumandco.com)